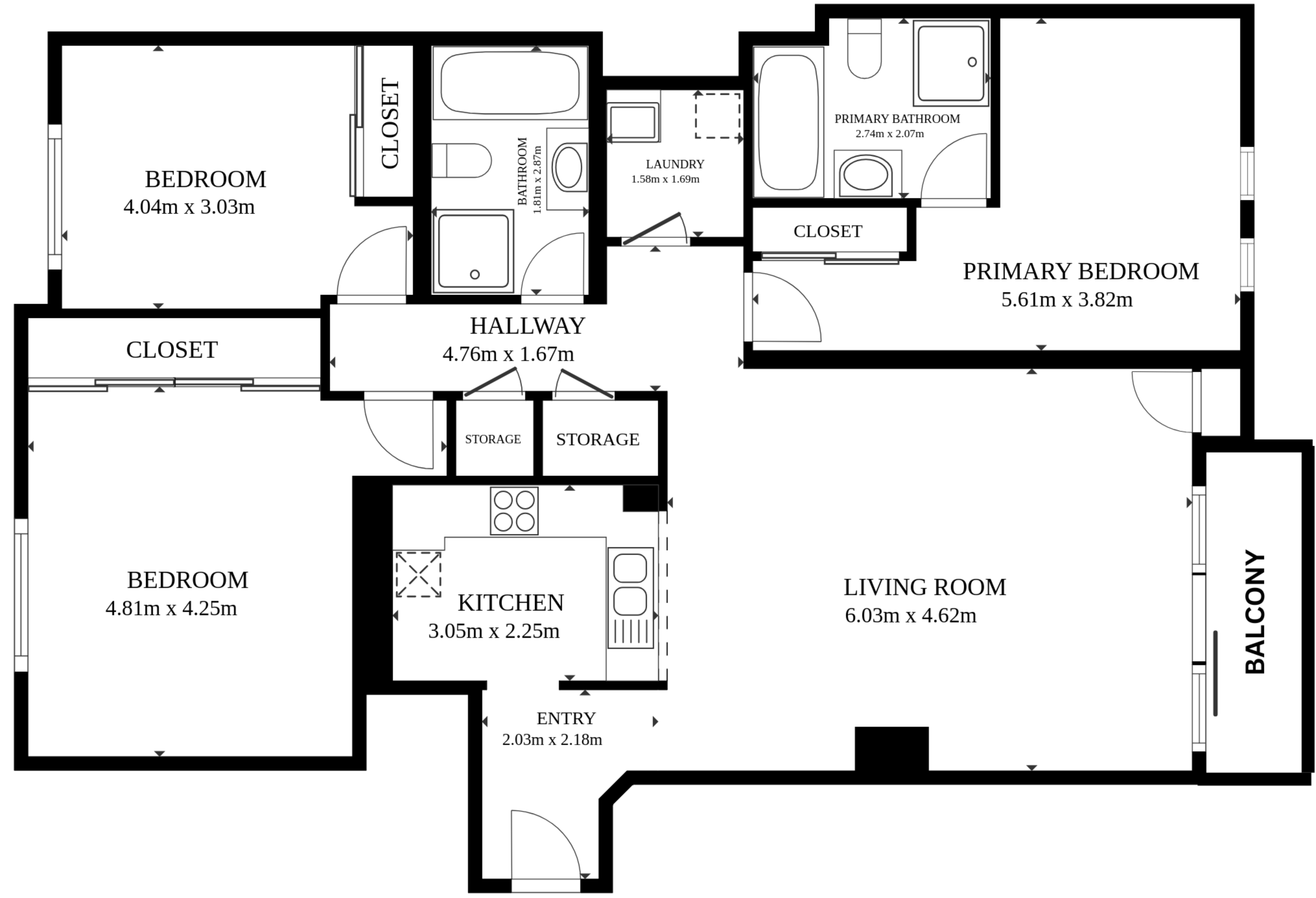
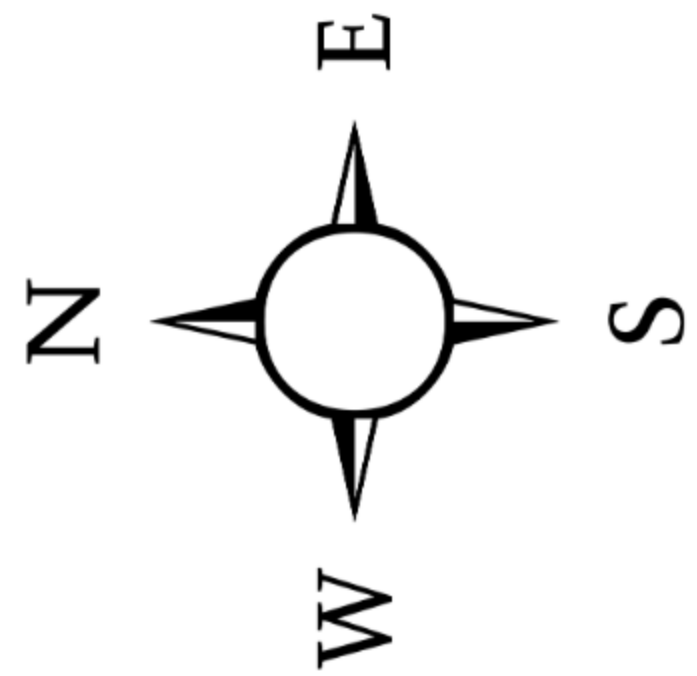
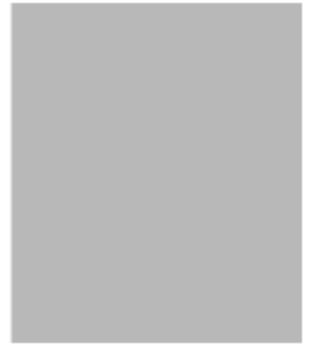
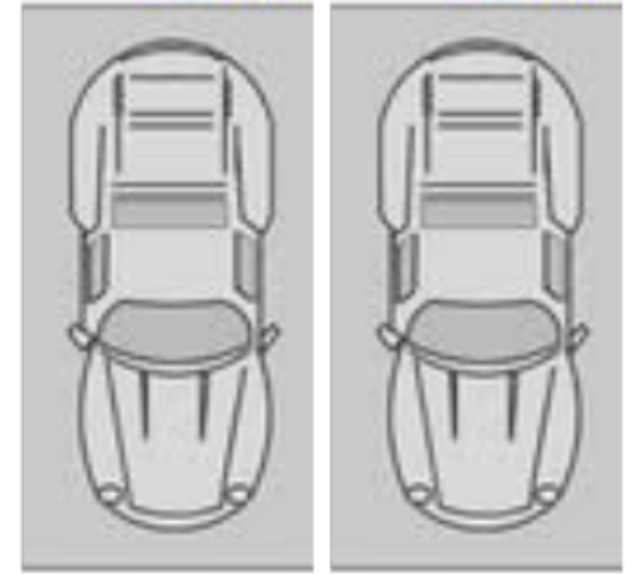


319/ 569 George St,  
Sydney, 2000, NSW



**2x CAR SPACE  
+ 1x STORAGE**



**FLOOR PLAN**

Apartment size: 119 sqm

2 Car space + 1 storage: 32 sqm

Total Area On Strata Title: 151 sqm

All dimensions and sizes on this floor plan are approximate, please refer to contract for exact measurements.

