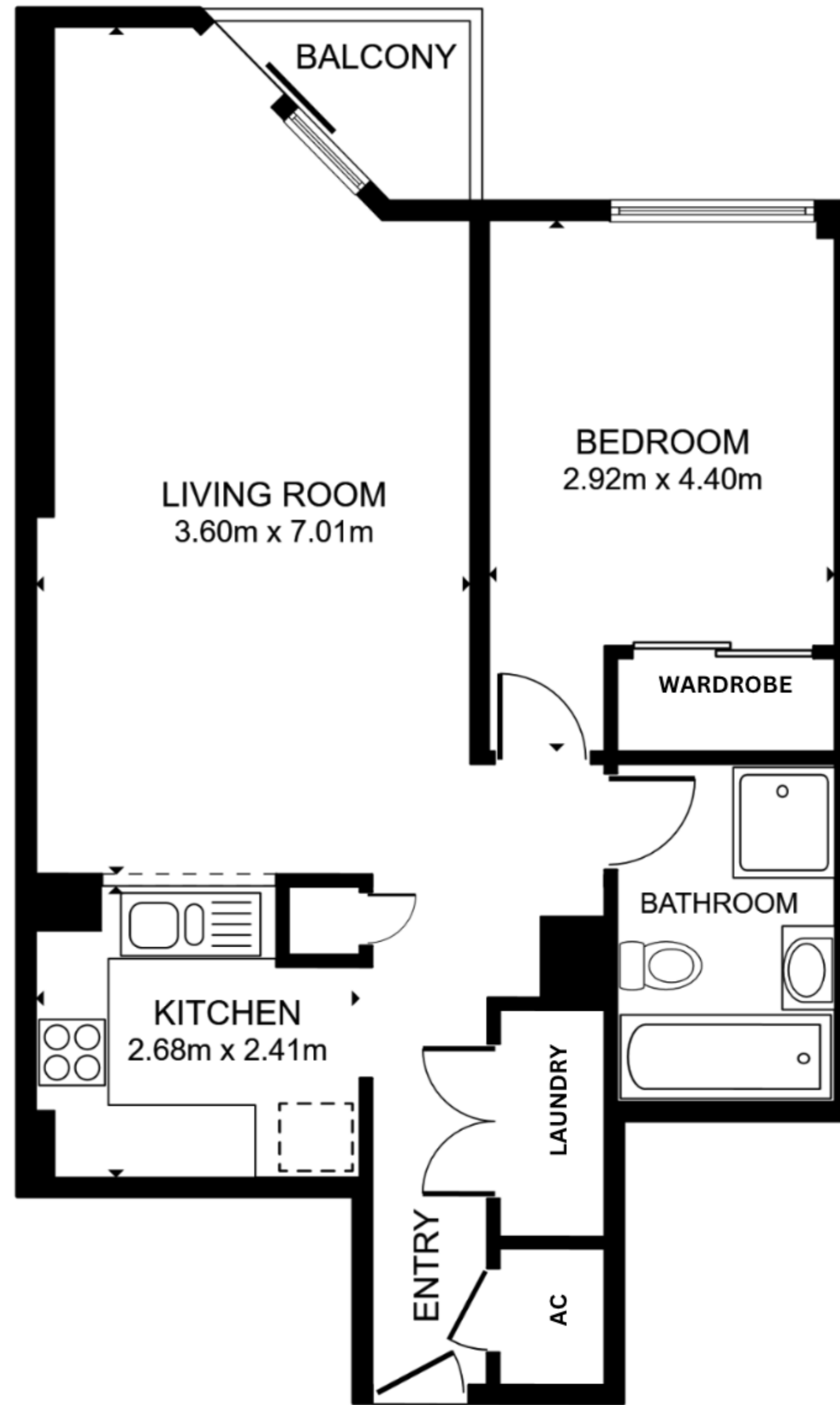
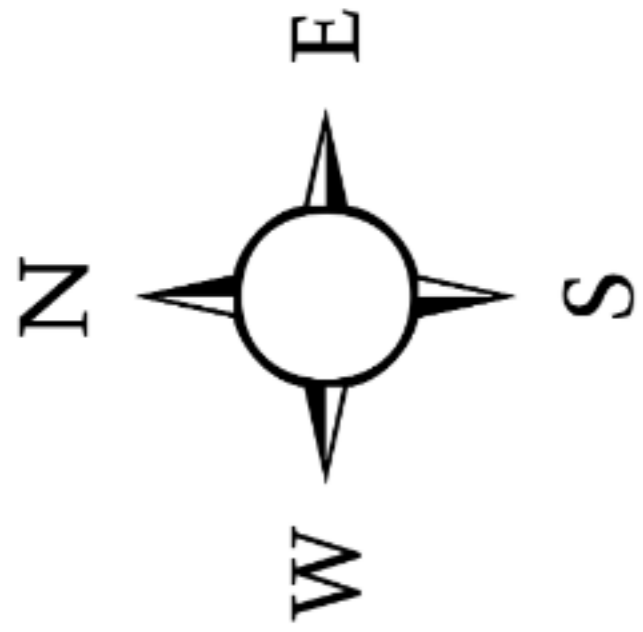


139/ 569 George St,
Sydney, 2000, NSW



1x CAR SPACE + 1x STORAGE



FLOOR PLAN

Apartment size: 58 sqm

1 Car space + 1 storage

Total Area On Strata Title: 75 sqm

All dimensions and sizes on this floor plan are approximate, please refer to contract for exact measurements.

