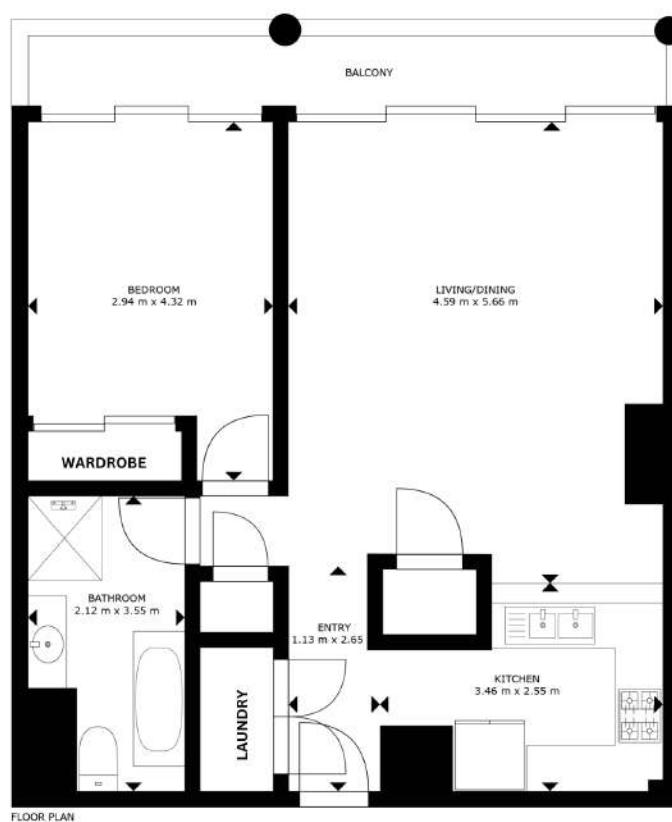
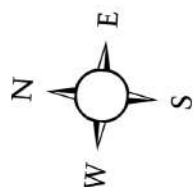


290/569-581 George St, Sydney NSW 2000



**1x CAR SPACE + 1x  
STORAGE**



Apartment size: 70 sqm

1 Car space + 1 storage: 22 sqm

Total Area On Strata Title: 92 sqm

All dimensions and sizes on this floor plan are approximate, please refer to contract for exact measurements.

